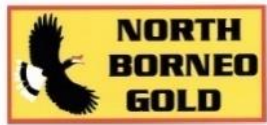




# Disclaimer

**BESRA**



## **Forward looking statements and forecasts**

*This presentation has been prepared by Besra Gold Inc and contains forward-looking statements. Forward-looking statements include those containing words such as “anticipate”, “estimates”, “forecasts”, “indicative”, “should”, “will”, “would”, “expects”, “plans” or similar expressions. Indications of, and guidance or outlook on, future earnings or financial position or performance, including forecast financial information derived from production, are also forward-looking statements. You are cautioned not to place undue reliance on forward-looking statements. Forward-looking statements are provided as a general guide only. Such forward-looking statements are based on information available as at the date of this presentation and are not guarantees of future performance and involve known and unknown risks, uncertainties, assumptions and other important factors, many of which are beyond the control of the Company **including approval of renewal of Lease ML 05/2012/D which is due to expire in January 2025**, are preliminary views and are based on assumptions and contingencies subject to change without notice, and which could cause actual results or trends, projections, guidance and estimates to differ materially from those expressed in this presentation. Relevant factors include risks associated with exploring for gold, project development and construction and the mining, processing and sale of gold, including without limitation, the ability to obtain finance on expected terms, obtaining environmental approvals and the time and conditions attached to the same, changes in commodity prices, foreign exchange fluctuations and general economic conditions, increased costs and demand for production inputs, the speculative nature of exploration and project development, including the risks of obtaining necessary licenses and permits and diminishing quantities or grades of reserves, political and social risks, changes to the regulatory framework within which the Company operates or may in the future operate, environmental conditions including extreme weather conditions, geological and geotechnical events, and environmental issues, recruitment and retention of personnel, industrial relations issues and litigation. Readers of this presentation are cautioned not to place undue reliance on forward-looking statements included in it. Forward looking statements in this presentation only apply at the date of issue. Subject to any continuing obligations under applicable law or any relevant securities exchange listing rules, in providing this information the Company does not undertake any obligation to publicly update or revise any of the forward-looking statements or to advise of any change in events, conditions or circumstances on which any such statement is based.*

## **Disclaimer**

*This presentation is dated 16 December 2024 and is current as at that date; the Company disclaims any obligation to update this presentation. It has been prepared with due care, but no representation is made as to the accuracy, fairness or completeness of the information. It contains a summary of information about the Company, is general in nature and does not purport to be complete or contain all the information an investor would require when evaluating a possible investment in the Company. To the maximum extent permitted by law, the Company, related bodies corporate and their directors, agents, officers and advisers disclaim all liabilities and make no representations regarding the presentation. This presentation does not constitute financial product or investment advice and has been prepared without taking into account the objectives, financial or tax situation or particular needs of any individual investor, who should seek advice from their own financial, legal, tax and other independent advisers.*



**Jugan Pilot Plant Update**

**Project Development Strategy**

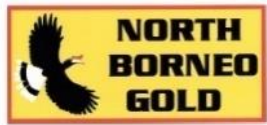
**Recent Activities**

**Next Steps**



# Jugan Pilot Plant

# BESRA

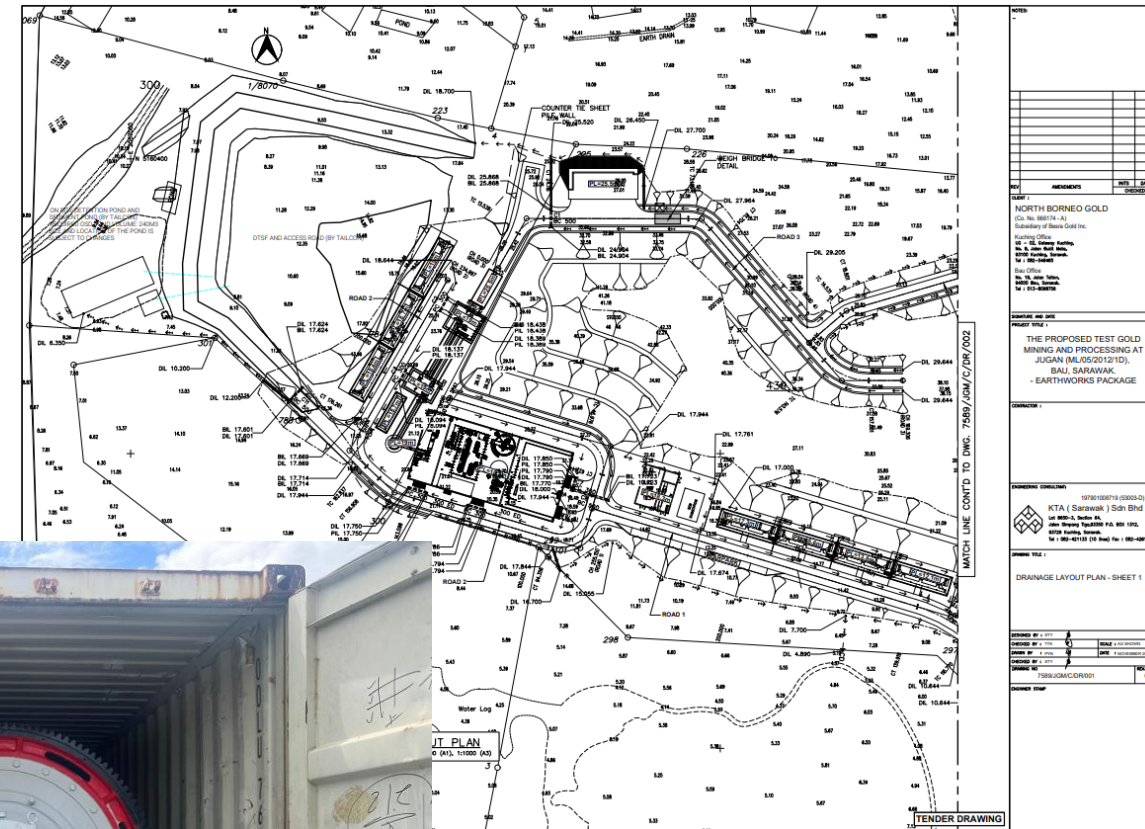


## COMPLETED TO DATE

- Baseline environmental monitoring
- Design, procurement and delivery of major components
- Earthworks design including TSF
- Sterilisation drilling programme

## NEXT STEPS

- Approval of ML/05/2012/D lease renewal date TBA
- Approval of sediment control plan by local authorities
- Award and Execute Earthworks Tender Package including TSF construction (package released)
- Finalise (minor) local government approvals
- Finalise drawings for steelwork construction
- Award and execute construction tender package

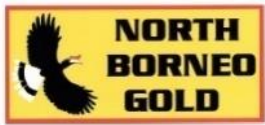






# Project Development Strategy

# BESRA



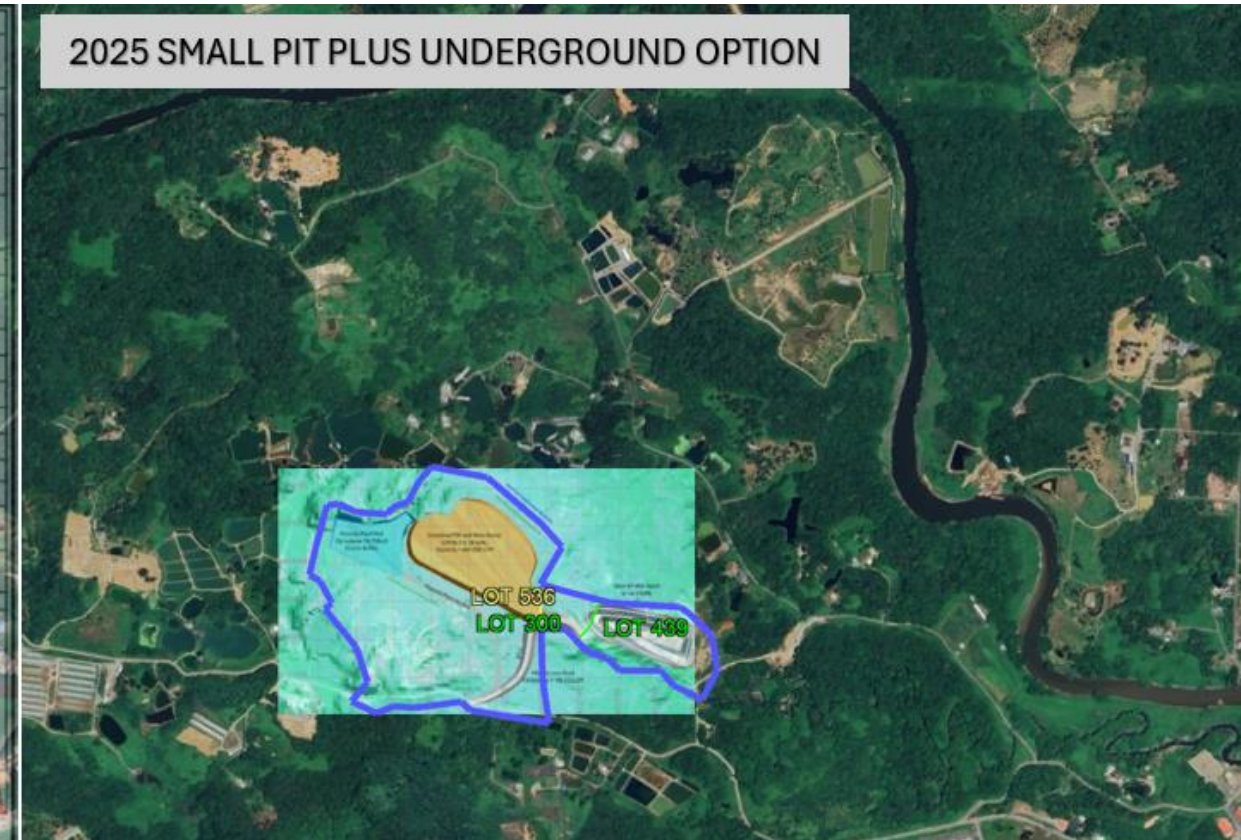
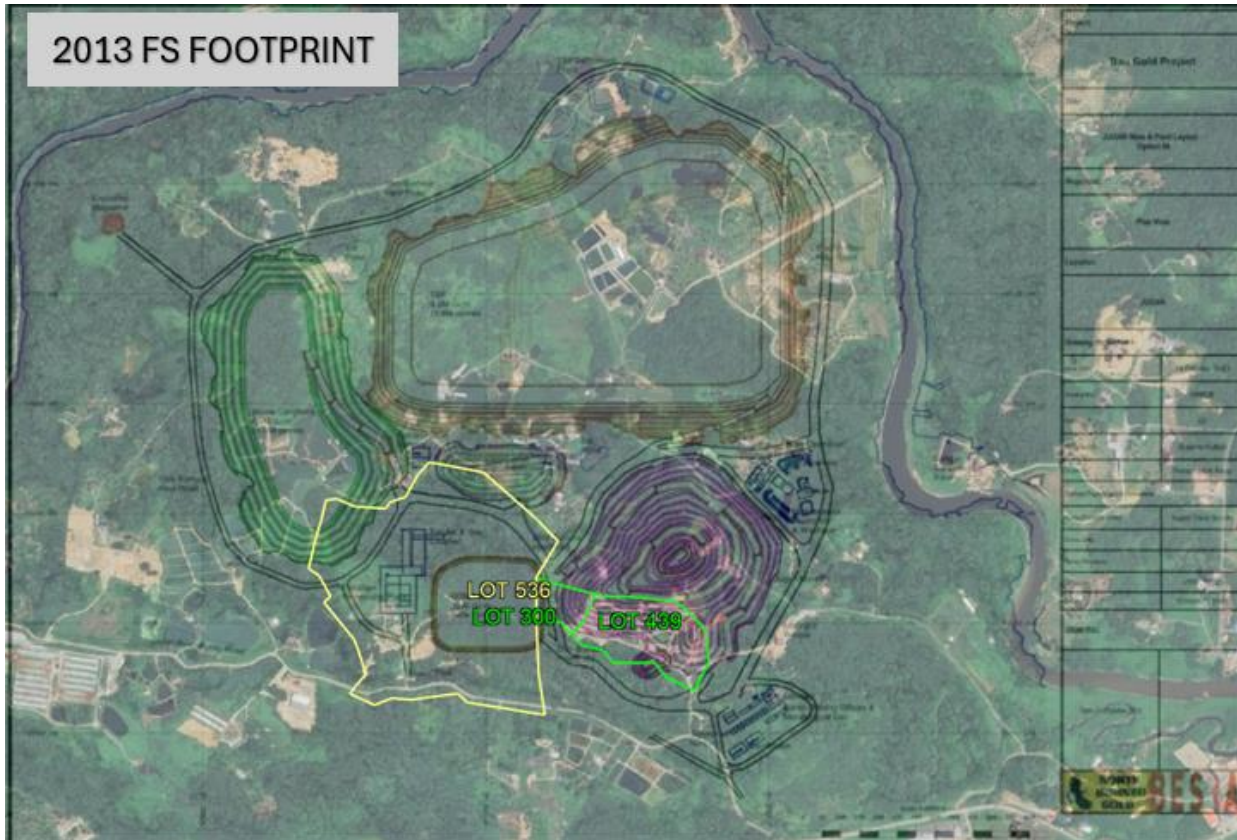
## FOCUS ON

- Local employment
- Environment
- Community
- Timing
- Gold production

**Well positioned for favourable ESG outcomes**

## HOW TO DO THIS

- Minimum land disturbance
- TSF (Tailings storage facility) method
- TSF and waste dump size
- Environmental monitoring for compliance
- Hydropower options
- Recognise concentrate production limitations

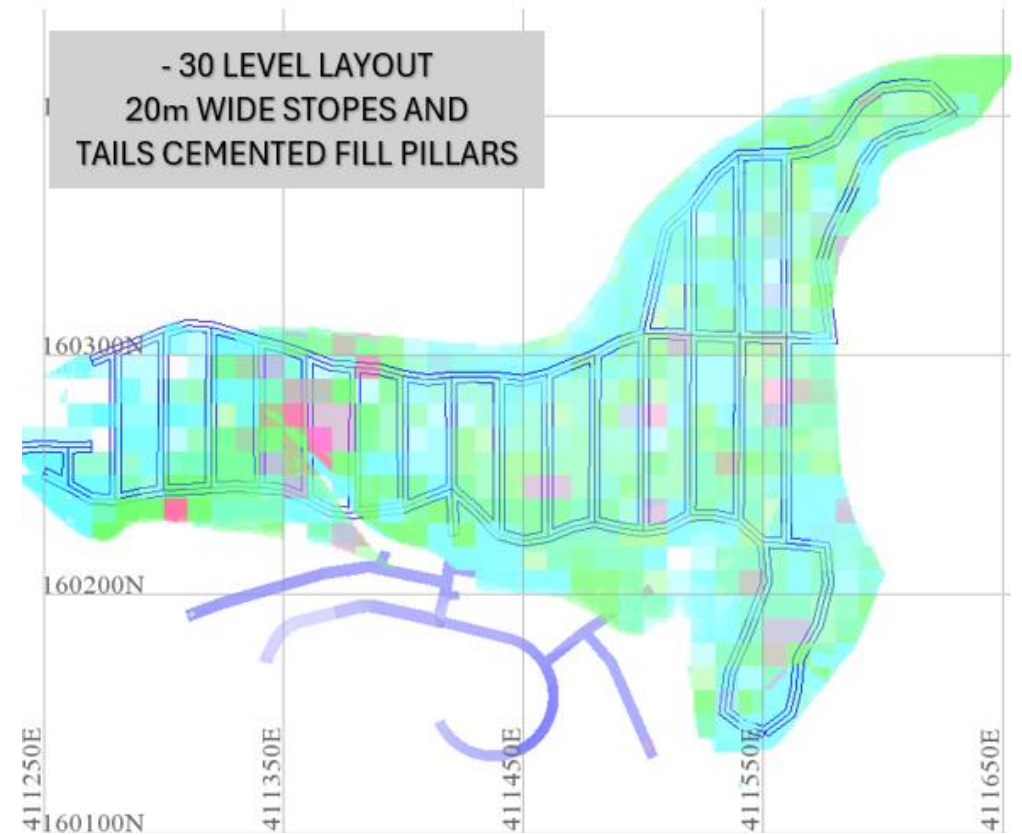
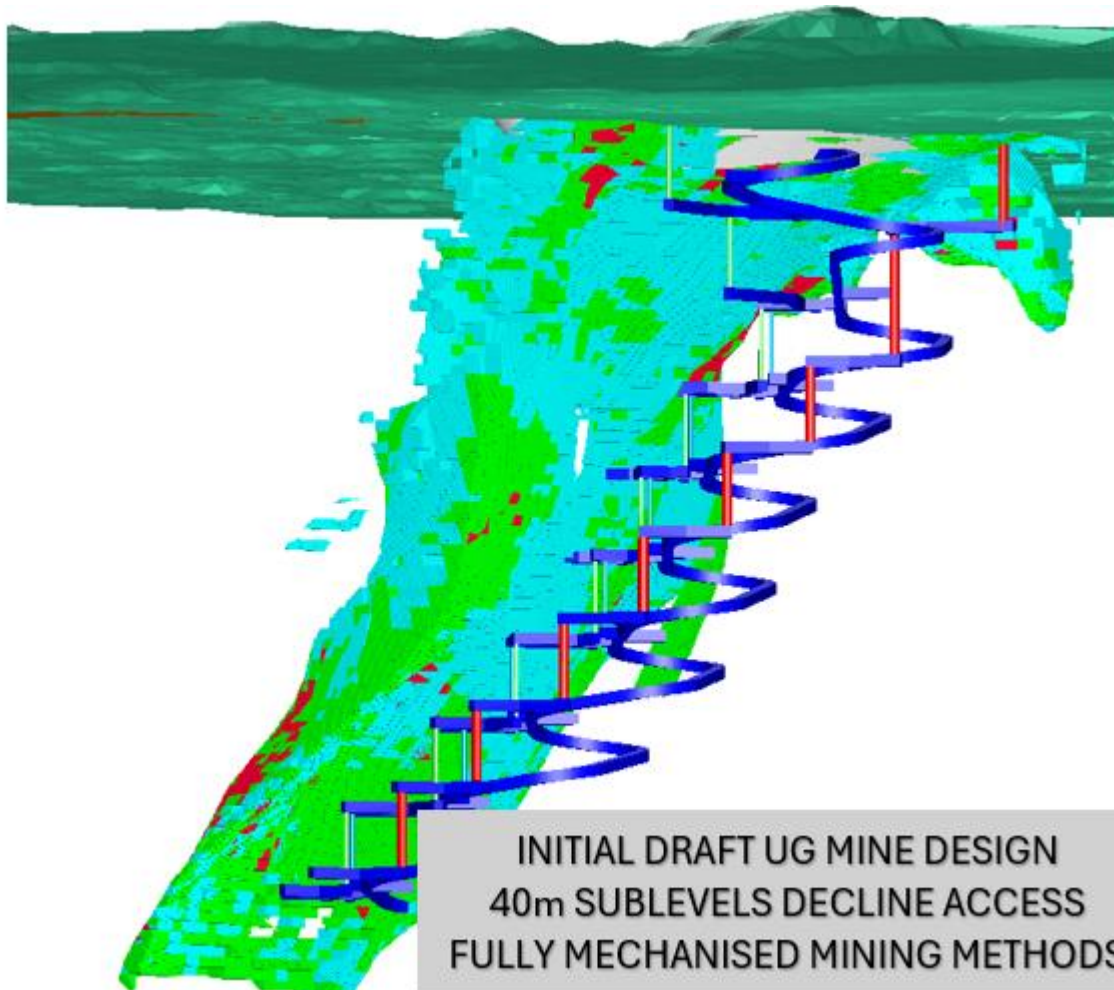
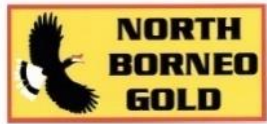






# Project Development Strategy

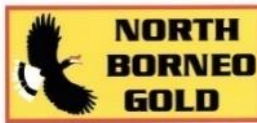
# BESRA



MORE LIKELY TO REDUCE TO 25m  
SUBLEVELS PENDING  
GEOTECHNICAL STUDY OUTCOMES



# Project Development Strategy



## MINIMUM LAND DISTURBANCE

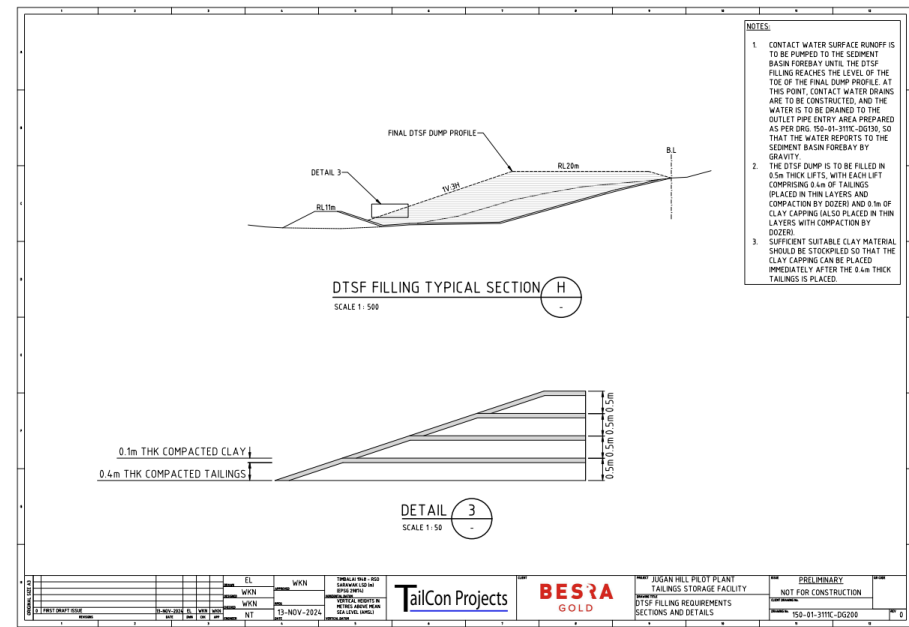
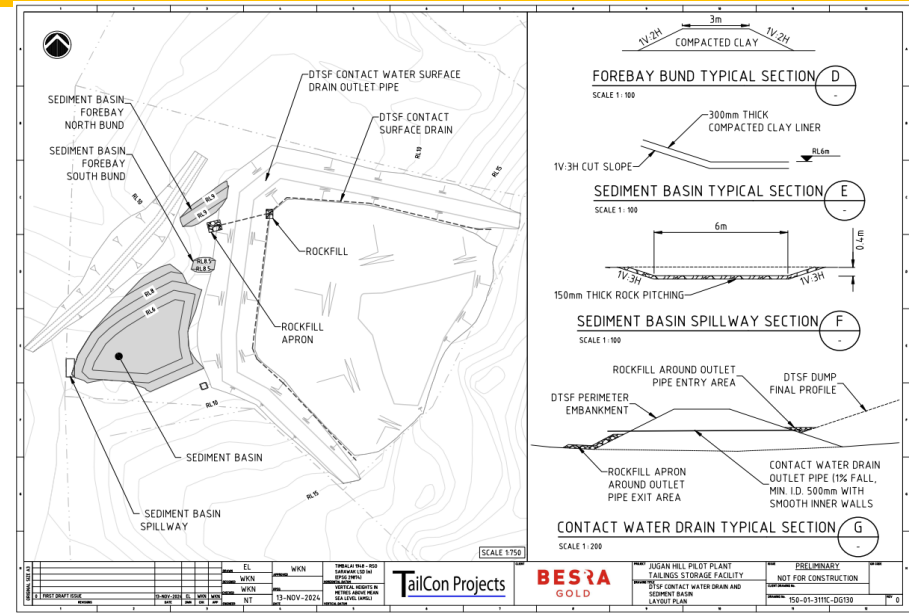
- Reduce open pit footprint
- Investigate mechanised UG options
- Reduce TSF footprint
  - Less land acquisition required
  - Flood management is much simpler

## TSF METHOD

- Dry stack tailings
- Encapsulate in benign waste
- Regular compliance monitoring
- Large steel tank or tailings storage socks for pilot plant as backup under consideration

## TSF SIZE

- Reduce by sending tailings underground for use in cemented tailings pillars





# Project Development Strategy



## POWER

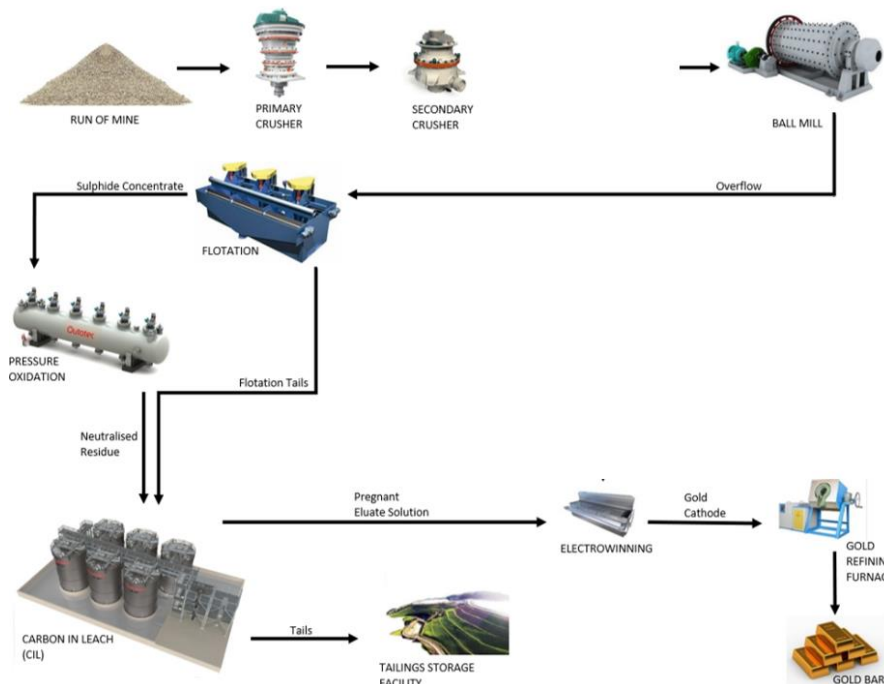
- Hydro power which is low carbon footprint is often preferred by investors
- Electric options favoured over diesel where practical

## CONCENTRATE PRODUCTION NOT FAVOURED FOR MANY REASONS

- Lower metallurgical recovery
- Low payability reducing with As content
- Transport of concentrate requires more management
  - Dust
  - Spillage
  - Noise

## OTHER PATHWAYS TO PRODUCE BULLION ON SITE PREFERRED

- Biological leach – good results investors have some reservations around possible downtime
- Albion process – effective only where ores are suitable
- Pressure oxidation leach (POX) – excellent recoveries higher power requirement.







# Jugan – Recent Activities

# BESRA

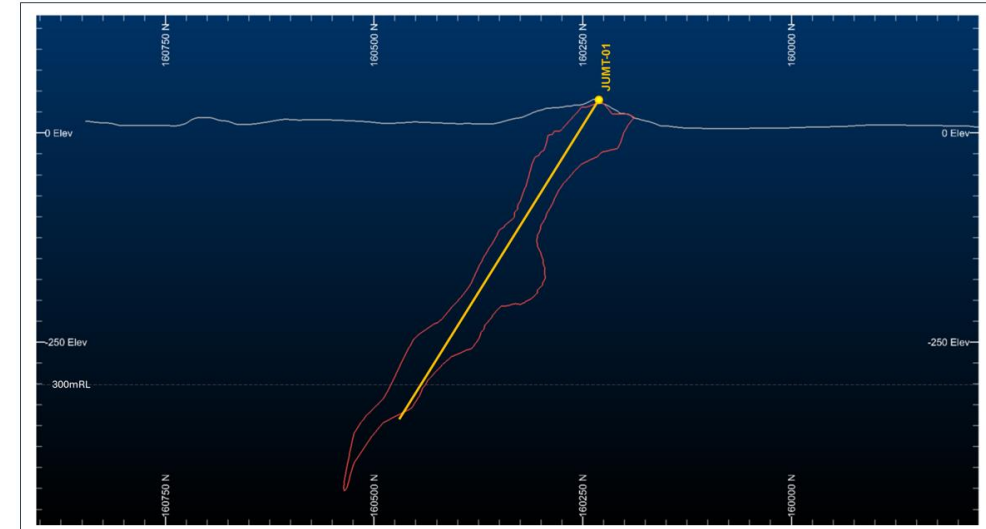
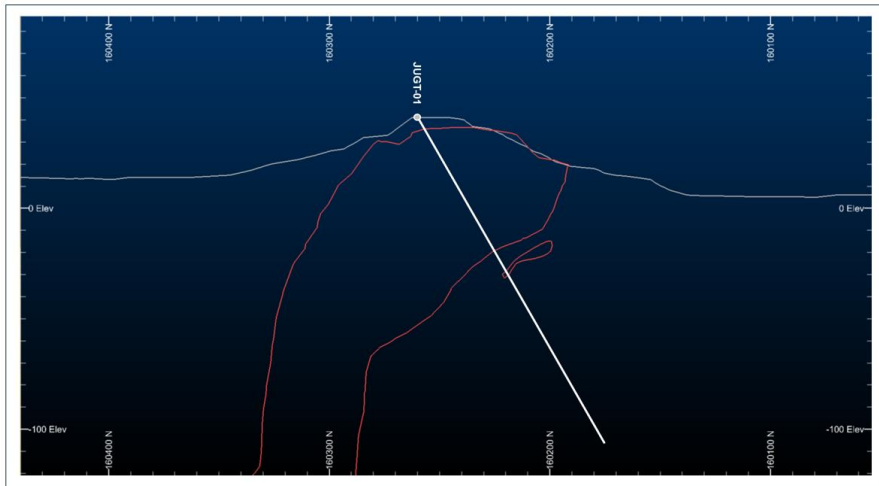
# NORTH BORNEO GOLD

## INFORMATION GATHERING

- Commenced metallurgical test work drilling early December 2024 to obtain representative sample for UG mining option
- Training commenced for accurate UG Geotech logging
- Open Pit and Underground Geotech drilling to follow

## FEASIBILITY STUDY PREPAREDNESS

- Reviewing potential Study Managers
- Jugan Resource Model Update
- Conceptual mine design with focus on underground
- Identifying critical path items for study
  - UG tailings paste / cemented hydraulic fill test work
  - Pressure Oxide Leach (POX) test work timelines

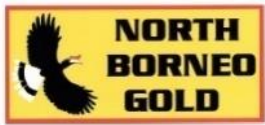






# Jugan – Next Steps

# BESRA



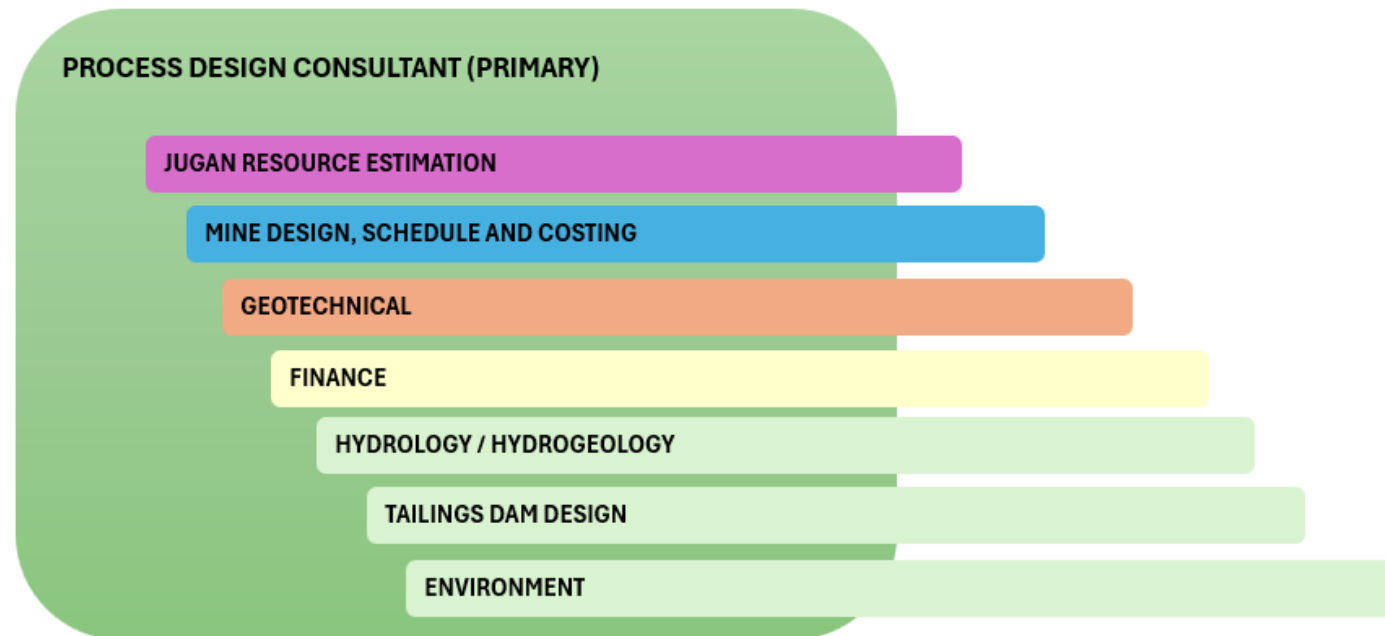
## APPROVAL OF ML/05/2012/D LEASE RENEWAL REQUIRED TO CONDUCT PILOT PLANT AND ANY FUTURE MINING OPERATIONS

	Q2 25	Q3 25	Q4 25	Q1 26	Q2 26	Q3 26	Q4 26	Q1 27
Deep Metallurgical Sample Drilling		█						
Sample Prep Flotation Qemscan		█	█					
BFS Level Metallurgical Testwork		█	█	█				
Pastefill / CHF Fill Testwork				█				
Processing Plant BFS Level Design		█	█	█	█	█		
Deep Geotechnical Drilling		█	█	█				
Tailings UG Backfill Optimization				█				
Jugan Resource Update		█						
Open Pit and Underground Mine Plan				█	█	█		
Financial Modelling and Report Wrting							█	
BFS/DFS Jugan Mine		█	█	█	█	█	█	█



## NEXT STEPS

- DISCUSSION ON STRATEGY - APPROVAL OF DIRECTION and STUDY LEVEL (BFS model below)



- GATHER P&A FROM PROCESS DESIGN CONSULTANTS x3 (SCOPE POX / ALBION 2.4 mtpa)

- FINALISE AND COMMENCE MET TESTWORK DRILLING (NEW LOCATIONS ALIGN MINE DESIGN)

- AWAIT ML/05/2012/D LEASE RENEWAL CONFIRMATION BEFORE MAJOR EXPENDITURE